

**SCHEMATIC INFORMATION:**

Model Name:	Professional Hot Roll Brush ESC-8316
Material:	ABS Plastic, PTC, Ceramic, Nylon
MOQ:	1-100, 000pcs
Color:	White
Length:	60 cm
Material type:	ABS Plastic, PTC, Ceramic, Nylon + Nylon
Power:	1500W
Voltage:	110V, 220V, 240V
Weight:	0.8kg
Power cord:	1.5m, 2m, 3m
Temperature:	150°C - 200°C
Features:	Temperature control buttons, 360° Swivel Cord, Cool Tip, LCD Display
Power consumption:	8500 BTU/hr
Heating element:	2 PTC Heating Element

**ESC-8316 Product Description:**

The ESC-8316 Professional Hot Roll Brush is a high-quality hair styling tool designed for professional use. It features a ceramic barrel and a PTC heating element for fast and even heat distribution. The brush is equipped with a 360-degree swivel cord and a cool tip for safety and convenience. The temperature control buttons allow for precise heat adjustment, and the LCD display provides real-time temperature feedback.

**ESC-8316 Professional Hot Roll Brush**  
 Size: 19mm, 25mm, 32mm



**Product Features and Specifications:**

The ESC-8316 Professional Hot Roll Brush is a high-quality hair styling tool designed for professional use. It features a ceramic barrel and a PTC heating element for fast and even heat distribution. The brush is equipped with a 360-degree swivel cord and a cool tip for safety and convenience. The temperature control buttons allow for precise heat adjustment, and the LCD display provides real-time temperature feedback.



Optional 1: All plastic teeth



Optional 2: All metal teeth



Optional 3: Half plastic teeth & half metal teeth



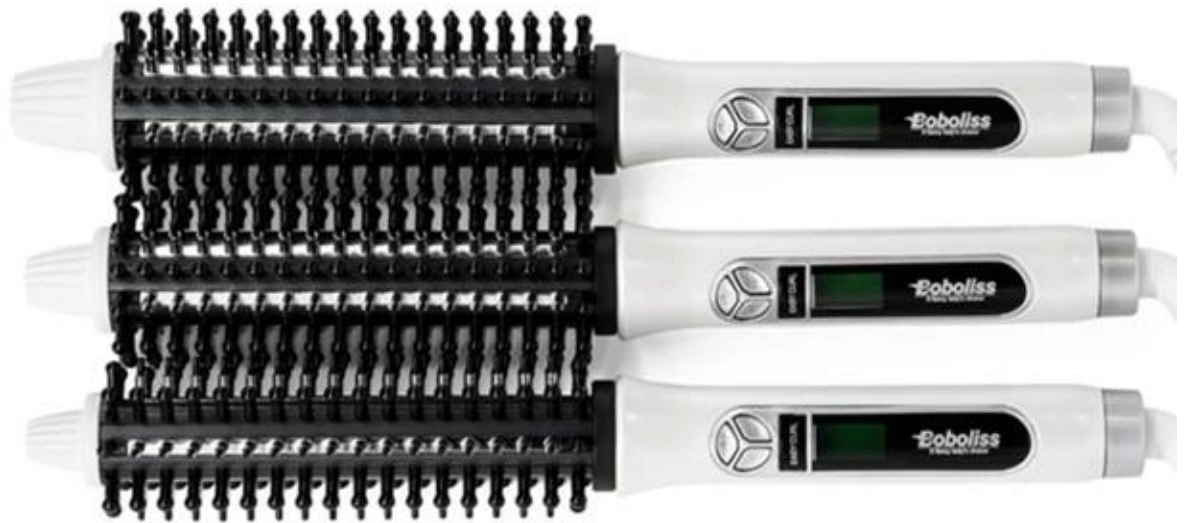
**ESC-8316:**

ESC-8316 32mm, 25mm, 19mm available. 32mm roller brush, 25mm roller brush, 19mm roller brush; 32mm roller brush, 25mm roller brush, 19mm roller brush.

32MM

25MM

19MM



**ESC-8316**

paiting.

Temperature: adjustable, 12 adjustable.

ESC-8316

ESC-8316

ESC-8316



